

# Massillon City Health Department



Mobilizing for Action through Planning and  
Partnerships (MAPP)

10/19/2021

# What is MAPP?

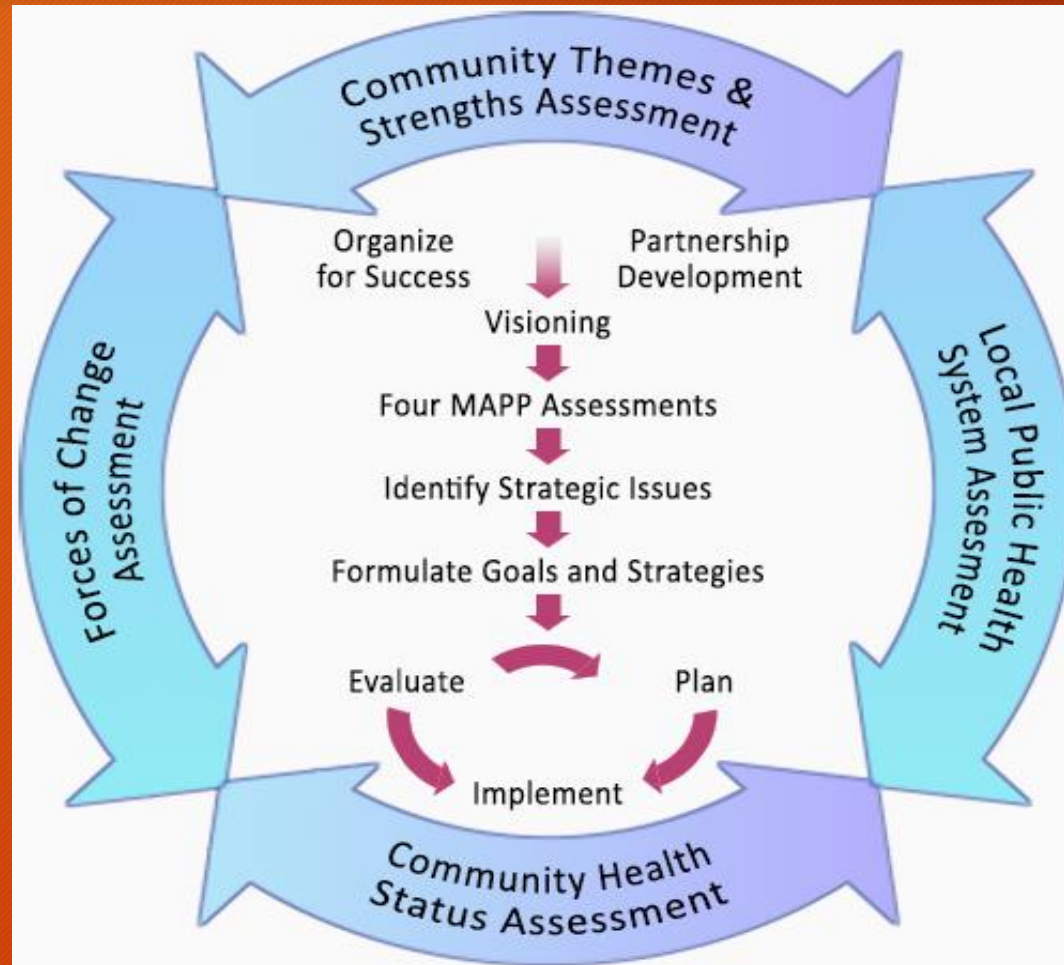
- Mobilizing for Action through Planning and Partnerships (MAPP) framework is now one of the most widely used and reputable community health improvement (CHI) frameworks in the field.
- MAPP provides a structure for communities to assess their most pressing population health issues and align resources across sectors for strategic action.
- It emphasizes the integral role of broad stakeholders and community engagement; the need for policy, systems, and environmental change (PSE) change; and alignment of community resources toward shared goals. The process results in a community health (needs) assessment (CHNA) and a community health improvement plan (CHIP)

# MAPP Foundational Principles

The foundational principles articulate the guiding values for the MAPP redesign and create a vision for community health improvement as a community-led process to improve population health.

- Equity
- Inclusion
- Trusted Relationships
- Community Power

# Phases of the MAPP Process



# Phases of the MAPP Process

Phase 1:

**Organize for Success/Partnership Development.** In this phase, a core group and an inclusive steering committee are recruited, and the process is organized and planned out.

# Phases of the MAPP Process

## Phase 2:

**Visioning.** The community and the committee work together to develop an overall, shared vision of health in the community that will guide the planning and action to follow.

# Phases of the MAPP Process

## Phase 3:

**The Assessments.** As mentioned, perhaps the main feature that sets MAPP apart from other similar models is the depth of its community assessment. There are really four assessments, although they are clearly connected:

- The *Community Themes and Strengths Assessment* asks residents to name the issues that are important to them, to talk about how they feel about the community, and to identify community assets - the resources that already exist in the community that can be used to address health and other issues.
- The *Local Public Health System Assessment* (LPHSA) examines all elements of the public health system, from hospitals to home health aides, as well as how those elements work, how they're structured, how they interact with other sectors and elements of the community, and the nature of their resources. This assessment is completed using the National Public Health Performance Standards Program local instrument.
- The *Community Health Status Assessment* looks at the health of community members and of the community. Quality of life issues - employment, housing, the environment, etc. - are also considered here as part of the community perspective on health.
- The *Forces of Change Assessment* examines what is happening or might happen in the future that will have an impact on community health.

# Phases of the MAPP Process

## Phase 4:

**Strategic Issues.** Using a participatory approach, the community and the committee examine the data collected in the previous phase to identify the key issues that must be addressed in order to realize the shared vision.



# Phases of the MAPP Process

## Phase 5:

**Goals/Strategies.** Once the strategic issues are identified, the group sets goals for each, based on the vision and assessment data, and formulates strategies for reaching those goals. These goals and strategies map the route from the current circumstances of the community to the future laid out in the vision.

# Phases of the MAPP Process

## Phase 6:

**Action Cycle.** This phase comprises the planning, implementation, and evaluation of the action that the group takes to achieve its goals. It's seen as a cycle because the assumption is that the process is ongoing. Action is continually evaluated and adjusted to achieve greater effectiveness. The planning/implementation/evaluation cycle continues until the community achieves its vision...and generates a new vision to work toward.

# Why Use MAPP?

- MAPP uses a participatory process
- MAPP focuses on strengthening the local public health system
- MAPP increases the visibility of public health in the community
- The MAPP process creates government leadership on public health issues
- MAPP takes a community perspective with the overall goal of creating a healthy community