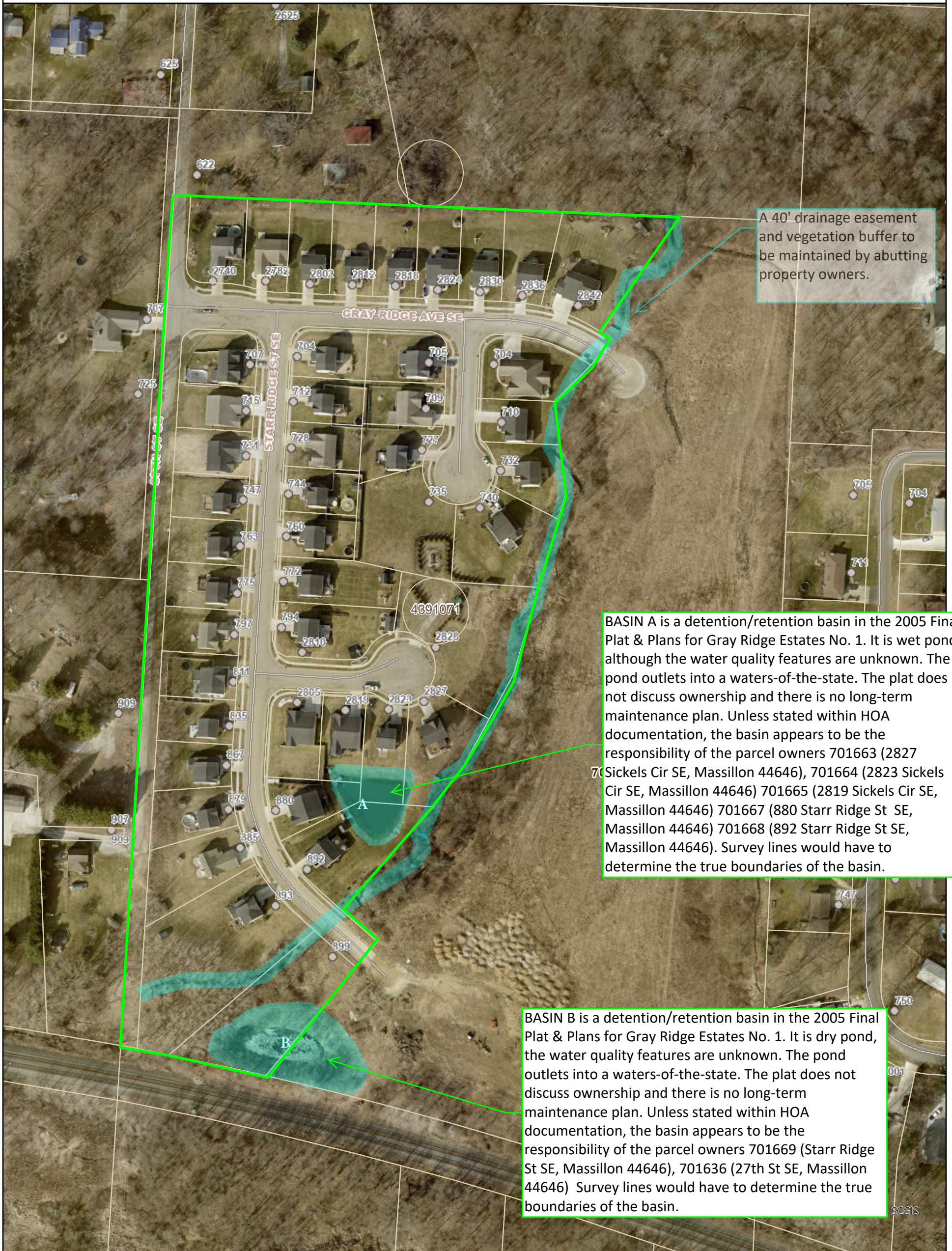


MASSILLON Gray Ridge Estates Storm Water Detention/Retention



A 40' drainage easement and vegetation buffer to be maintained by abutting property owners.

BASIN A is a detention/retention basin in the 2005 Final Plat & Plans for Gray Ridge Estates No. 1. It is wet pond although the water quality features are unknown. The pond outlets into a waters-of-the-state. The plat does not discuss ownership and there is no long-term maintenance plan. Unless stated within HOA documentation, the basin appears to be the responsibility of the parcel owners 701663 (2827 Sickels Cir SE, Massillon 44646), 701664 (2823 Sickels Cir SE, Massillon 44646) 701665 (2819 Sickels Cir SE, Massillon 44646) 701667 (880 Starr Ridge St SE, Massillon 44646) 701668 (892 Starr Ridge St SE, Massillon 44646). Survey lines would have to determine the true boundaries of the basin.

BASIN B is a detention/retention basin in the 2005 Final Plat & Plans for Gray Ridge Estates No. 1. It is dry pond, the water quality features are unknown. The pond outlets into a waters-of-the-state. The plat does not discuss ownership and there is no long-term maintenance plan. Unless stated within HOA documentation, the basin appears to be the responsibility of the parcel owners 701669 (Starr Ridge St SE, Massillon 44646), 701636 (27th St SE, Massillon 44646) Survey lines would have to determine the true boundaries of the basin.

Stark County Parcels
Stark County Parcels

