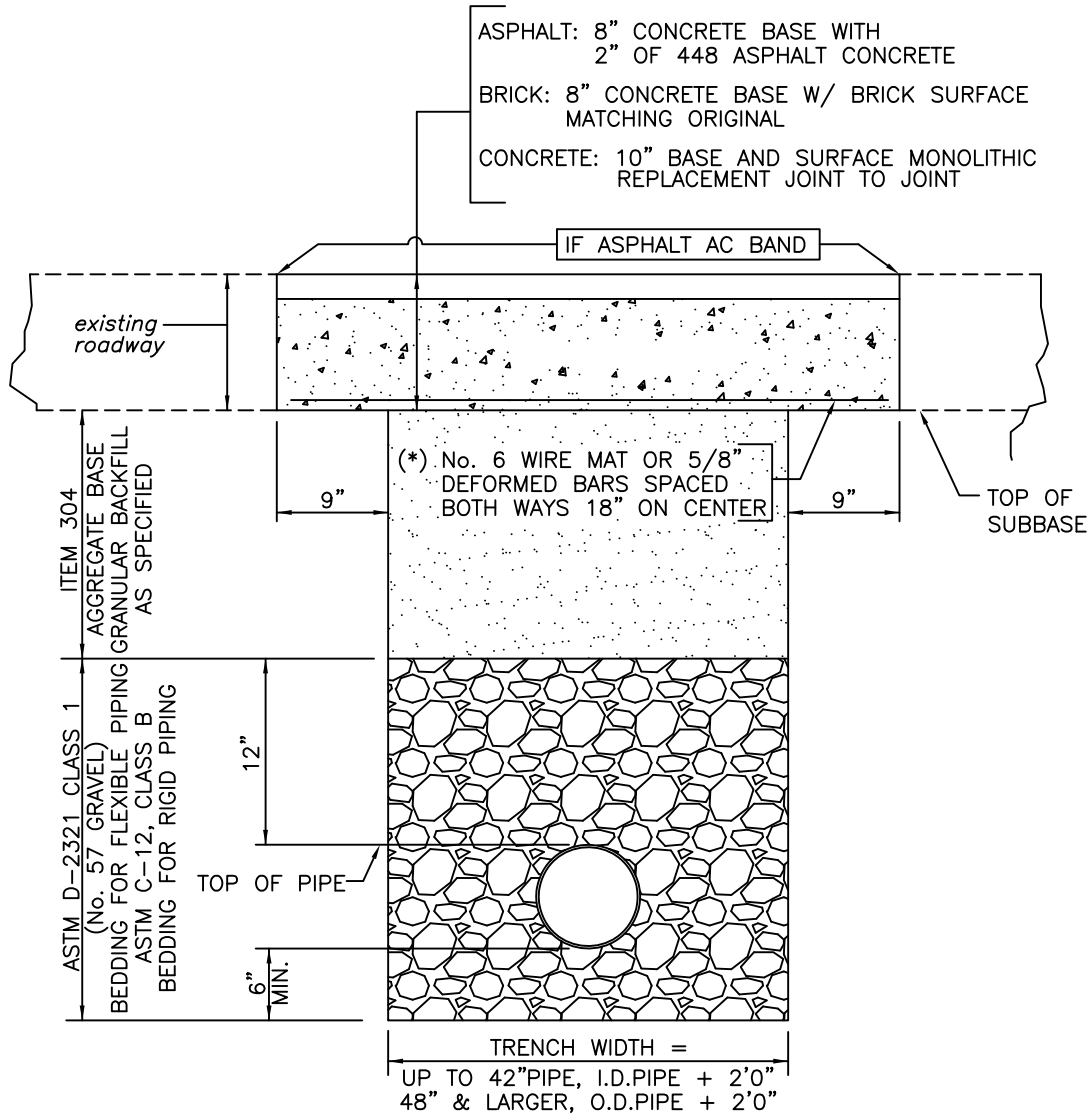


**TRENCH DETAIL
 WITHIN
 ROADWAY/DRIVEWAY**



NOTES

- 1) CONCRETE BASE SHALL BE OF 1:2:4, 6 BAG MIX, PORTLAND CEMENT CONCRETE USING HIGH EARLY STRENGTH CEMENT AND IT MUST BE CURED AT LEAST 48 HRS.
- (*) MUST BE USED WHEN WIDTH OF TRENCH IS GREATER THAN 3' AT THE SUBBASE. FIBER CONCRETE BASE MAY BE USED IN LIEU OF THE BARS.